

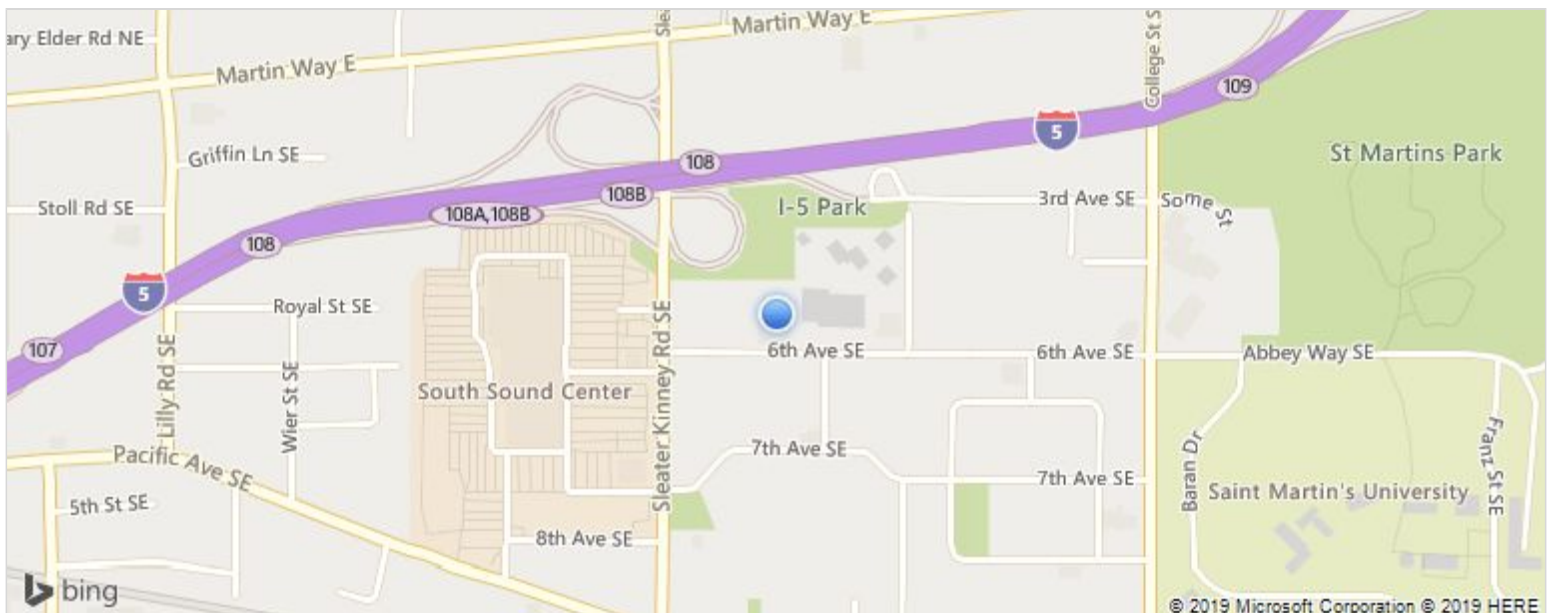
LEASE

**\$17.00 SF/Year to \$18.00  
SF/Year**  
**Office Bldg**  
**51,226 SF**

**Bell Towne Centre**  
4200 6th Ave SE  
Lacey, WA 98503



<b>Property Type:</b>	Office Bldg
<b>Available Space:</b>	28,028
<b>Min Divisible Area:</b>	595
<b>Listing ID:</b>	S24PC2
<b>MLS ID:</b>	588292
<b>Style:</b>	Office Bldg -General
<b>Building Size:</b>	51,226 SF



Bell Towne Centre - 4200 6th Ave SE Lacey WA, 98503 United States

**Online Profile** <http://www.cbcworldwide.com/properties/profile/S24PC2-Lacey-WA>

## Property Description

Easy access just 1 Block from Sleater Kinney interchange on I-5, blocks from Lacey City Hall. Located in the Woodland Office district. Great street appeal, signage available. Surrounded by amenities such as restaurants, coffee and transit center across street. One of the most attractive buildings in the market area. Entire Ground Floor availability currently occupied. Vacant Third-floor space plus a mezzanine 4th-floor space. Balconies available. Co-tenants include Providence Medical. Lease option to purchase available. Building would be great for an owner-user.

## Additional Features

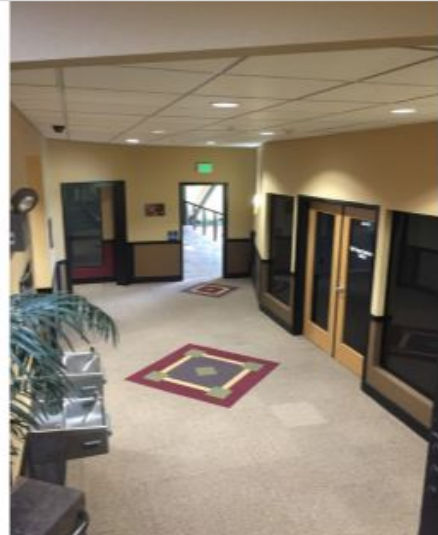
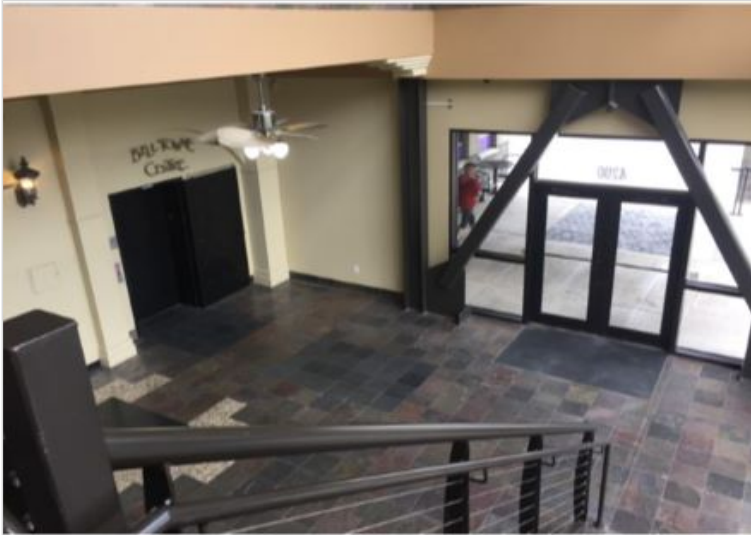
**Lot Size:** 1.65 AC

**Kim Adams**

kimadams@cbcworldwide.com

**Direct** 206-949-8723

**Mobile** 206-949-8723



<http://www.cbcdanforth.com/>  
253-874-3200

Danforth  
33313 1st Way S  
Federal Way, WA 98003

© 2019 Coldwell Banker Real Estate LLC, dba Coldwell Banker Commercial Affiliates. All Rights Reserved. Coldwell Banker Real Estate LLC, dba Coldwell Banker Commercial Affiliates fully supports the principles of the Equal Opportunity Act. Each Office is Independently Owned and Operated. Coldwell Banker Commercial and the Coldwell Banker Commercial Logo are registered service marks owned by Coldwell Banker Real Estate LLC, dba Coldwell Banker Commercial Affiliates. Each sales representative and broker is responsible for complying with any consumer disclosure laws or regulations.

The information provided is deemed reliable, but it is not guaranteed to be accurate or complete, and it should not be relied upon as such. This listing information should be independently verified before any person enters into a transaction based upon it.